

CAPITAL COLLEGE OF HIGHER EDUCATION
(Affiliated to Nagaland University)



PROSPECTUS
2024-25

*“Onto
Greater
Heights”*





~ CONTENTS ~

PRINCIPAL'S MESSAGE	1
GOVERNING BODY PROFILE	2
PROFILE OF THE COLLEGE	3-4
COURSE DESIGN AND STRUCTURE	5-6
ADMISSION PROCEDURE AND FEE STRUCTURE	7
QUALITY CONTROL	8
LEARNING RESOURCES	9-11
EXTRACURRICULAR/EXTENSION ACTIVITIES	12-14
PHYSICAL INFRASTRUCTURE AND OTHER FACILITIES	15-17
STUDENTS SUPPORT SERVICES	17
FACULTY & VISITING LECTURERS PROFILE	18
COLLEGE RULES AND REGULATIONS	19
ACADEMIC CALENDAR 2024-25	20
COLLEGE ANTHEM	21



PRINCIPAL'S *Message*

The prospectus is the mirror image of an institution; its history, aims and vision, programmes and courses offered and the quality of teaching faculty and staff, infrastructure and learning resources available, and aspects of quality control that are in place. Keeping these things in mind I introduce to the reader the prospectus of our college for the Academic Session 2024-25.

Capital College of Higher Education (CCHE) was established in 2004, and the 1st academic session began in 2005 with only five students. So far, fifteen batches have graduated from the college. In order to provide the most effective and motivating teaching-learning experience to the students, the college maintains a student-teacher ratio of about 10:1. Even though separate campuses are maintained for arts and science streams; the infrastructure, equipments, and other resources available for effective delivery of the curriculum are second to none

From a very humble beginning, the college has now developed into a vibrant and progressive institution providing various academic programmes and skill oriented courses in order to equip the young learners to successfully face the various challenges of contemporary times and to ultimately find their place in this competitive world. Not only in academics, but also in many extracurricular activities at inter-college, university and state levels, many of our students have excelled and won many laurels. The college also gives much care to the development of personality and character of the students by providing ample opportunities in co-curricular activities to every student as well as counselling services. I am proud to say that many of our students have become responsible and productive citizens. Hence, any student who decides to enrol in this college has taken the correct decision in the pursuit of higher studies. The college administration, staff, and the teaching faculty welcome each and everyone to the family of Capital College of Higher Education.

Dr. Zokho Venuh
Principal



COLLEGE GOVERNING BODY

Chairman	: Vezuhu Keyho, Former Principal & Current Chairman, Supply Colony, Kohima
Member Secretary	: Dr. Zokho Venuh, Principal, Capital College of Higher Education(CCHE)
Member	: Vevohu Kezo, Vice Principal, Capital College of Higher Education(CCHE)
Member	: Dr. Khrietuo Doulo, Asso. Prof. Kohima Science College, Jotsoma(Retired)
Member	: Zacilhü Vadeo, Ex-Minister (NLA)
Member	: Kekhwengulo Lea, Vice Chairman, Nagaland Co-Operative Bank, Nagaland
Member	: Vekhozo Khamo, Former Principal, Alder College
Member	: Kenneth Punyü, Associate Prof, Kohima Science College, Jotsoma
Member	: Smt. Suohienuo, Principal CTC, Tuensang SIRD, Nagaland
Member	: Smt. Abeino Zashu, Senior Asst. Professor, CCHE
Member	: Prof. D. Kuolie, Dept. Linguistics NU, Meriema, Nagaland



PROFILE OF THE COLLEGE

BACKGROUND

Capital College of Higher Education (CCHE), established in 2004, is permanently affiliated to Nagaland University. The College is sponsored by National Academy Society. The college is also recognized by the University Grants Commission (UGC) under Art. 2(f) & 12(B) of the UGC Act of 1956. The college offers Bachelor of Arts (BA) and Bachelor of Science (BSc) In the learning process, the college considers it to be imperative that the students excel in their quest for knowledge. In order to achieve this, the college provides an excellent environment for academic pursuit by imparting total quality education by experienced, qualified, and committed teachers. As of now, fifteen batches have graduated, and the college takes pride in seeing many of its alumni successful in different walks of life.





LOCATION

The college presently has two campuses. The permanent campus is located at Thegaba, Phezhu, Jotsoma which is at a walking distance from Kohima Town. Presently, the permanent campus houses the Science Programme. The other campus which houses the arts Programme is located in the heart of the capital town below the State Library, and within walking distance from PHQ Junction, P.R.Hill. The environment of the college is congenial and conducive for study in terms of immediate access to transportation, medical aid, communication,

Scan for the Location



VISION

The long term vision is to make the college one of the premier higher education institutions in the state. Driven with a strong belief in holistic education, encompassing; academics, co-curricular activities, sports education and life-skills learning, the College endeavours to bring about an all-round development in the students. The College is driven with the vision to equip the students to achieve success as well as build the character and confidence to press onto greater heights and become contributing citizens in the society.

AIMS AND OBJECTIVES OF THE COLLEGE

The object of CCHE is to promote knowledge in the spheres of teaching and learning, research, promote interdisciplinary and multidisciplinary studies, and to disseminate education to the masses as well. The objectives and aims of the college are:

1. Impart quality education to students by developing skill, competence, and in-depth understanding in their field of study; both at the theoretical and practical levels.
2. Develop awareness at local, national, and global levels in order to keep pace with the changing times.
3. Strive for knowledge, wisdom and values that benefit and bear relevance to society.
4. Mould the students to be responsible citizens.

COLLEGE TIMING

The Classes start from 9:00 A.M and continues till 3:30PM



COURSE DESIGN AND STRUCTURE

Overview of FYUGP

The Four-Year Undergraduate Programme (FYUGP), initiated by the National Education Policy (NEP) 2020 in India, aims to revamp the existing Choice Based Credit System (CBCS) for greater flexibility and innovation in undergraduate education. FYUGP's core objective is to introduce a holistic, multidisciplinary approach to undergrad studies, nurturing intellectual, aesthetic, social, physical, emotional, ethical, and moral development. Its flexible curricular structure enables creative combinations of disciplines, empowering students to tailor their education to their interests and career goals. Ultimately, FYUGP seeks to modernize and elevate undergraduate education by integrating multidisciplinary learning, fostering soft skills, and enabling rigorous specialization, all within an adaptable and forward-thinking framework aligned with NEP 2020's vision. Following the recommendation of UGC regarding the introduction of the new FYUGP system in all the affiliated colleges, the College has also gladly introduced the system. The College firmly believes that this FYUGP system will enable our students to explore the broad avenues of learning and thereby empower themselves so as to enlighten and brighten the society.

The Components of FYUGP are divided as below;

1. Major (Core Courses): 2 Papers, 4 Credits each
2. Minor (Elective Courses): 1 Paper, 4 Credit
3. Multidisciplinary: 1 Paper, 3 Credit
4. Ability Enhancement: 1 Paper, 2 Credits
5. Skill Enhancement: 1 Paper, 3 Credits
6. Value added Courses(Common Pool): 1 Paper, 3 Credits

COURSE STRUCTURE CURRICULUM AND CREDIT FRAMEWORK FOR UNDERGRADUATE PROGRAMMES

Semester	Discipline Specific Courses- Core	Minor	Interdisciplinary courses	Ability Enhancement Course(languages)	Skill Enhancement Course//Internship/ Dissertation	Common value-added courses	Total Credit
I	C1: 4 C2: 4	Min1: 4	Environmental Science/CP (3 Credit)	ENG-1 (2 credit)	SEC :3 Credit (Common pool)		20
II	C3: 4 C4: 4	Min2: 4	Common Pool /Swayam (3 Credit)	MIL-1/Hindi-1/ Alt Eng-1 (2 credit)		Soft Skill/NCC/ CP (3Credit)	20
III	C5:4 C6-4	Min3:4	Understanding Heritage / Common Pool/Swayam (3 Credit)	ENG-2 (2 Credit)	SEC : 3 Credit (Common Pool)		20
IV	C7-4 C:8	Min :4		MIL-2/Hindi-2/Alt Eng-2 (2 Credit)	SEC-3 Credit (Common Pool)	Common pool/ NSS (3 Credit)	20
V	C-9 C-10 C-11	Min:5			Internship: 2	Work Ethics/CP (2 credit)	20
VI	C-12 C-13 C-14 C-15	Min 6:4					20
Total	60 Credit	24 Credit	9 Credit	8 Credit	11 Credit	8 Credit	120



COURSES OFFERED

Bachelor of Arts (BA)

English
History
Political Science
Sociology
Economics
Education
Tenyidie

Bachelor of Science (BSc)

Botany
Chemistry
Zoology
Mathematics
Physics

ASSESSMENT CRITERIA

A) 4 Credit Papers

Internal Assessment- 25 (10)
Presentation- 5
•Assignment-5
•Attendance-5
•Class Test- 10
End-Term Examination- 75 (30)

B) 3 and 2 Credit Papers

Internal Assessment 12.5 (5)
Assignment-2.5
Attendance-2.5
Presentation-2.5
Test-5
End Term Examination- 37.5 (15)



ADMISSION PROCEDURE AND FEE STRUCTURE

Application form alongwith the prospectus can be procured from the college office on working days during working hours on payment of Rs. 200(Rupees Two Hundred) only. It can also be downloaded from the college website www.capitalcollege.edu.in. Applications for the Bachelor of Science shall undergo screening and the list of selected candidates will be declared at a later date.

DOCUMENTS REQUIRED AT THE TIME OF ADMISSION

1. Original & 3 photocopies of HSLC & HSSLC marksheet & admit card, alongwith original copy of HSSLC (NBSE) registration card
2. Transfer/Pass Certificate from previous college/school
3. No Objection Certificate (NOC) from the Nagaland University for those coming from other colleges
4. Migration Certificate in case the applicant is from outside the NBSE/Nagaland University
5. Attested photocopy of ST and Indigenous Certificate for BA/BSc1st Semester
6. 5 copies of recent colour passport size photograph

📞 8974459225 / 9436645272 ✉ cchekohima@gmail.com 🌐 www.capitalcollege.edu.in

FEE STRUCTURE

BACHELOR OF ARTS

Sl. No.	Fee	Amount
1	Admission Fee University Enrolment, Registration, Library, Development, Internal examination, Establishment, IQAC , Identity Card, Games & Sports , Magazine, Bulletin, Literary and other activities, & Students fund, Seminar/Workshops.	Rs. 9550/- per semester
2	Uniform & Notebooks	Rs. 4200/- per semester
	Total Amount Payable	Rs. 13750/-

BACHELOR OF SCIENCE

Sl. No.	Fee	Amount
1	Admission Fee University Enrolment, Registration, Library, Development, Internal examination, Establishment, IQAC , Identity Card, Games & Sports , Magazine, Bulletin, Literary and other activities, & Students fund, Seminar/Workshops.	Rs. 9550/- per semester
2	Laboratory fee	Rs. 5000/-
3	Uniform & Notebooks	Rs. 4200/-
	Total Amount Payable	Rs. 18750/-



QUALITY CONTROL

IQAC

The Internal Quality Assurance Cell (IQAC) is the central quality monitoring body of the institution. The primary aim of IQAC is to ensure that the institution continues to strive towards excellence in all academic and administrative spheres. Consisting of the Coordinator, Principal, Heads of all departments and nominated members from the College, the IQAC functions as a cell that continuously monitors the institutional practices and suggest measures for achieving quality in the institution.

The institutional aspects that the IQAC monitors are;

- Curricular Aspects
- Teaching-Learning and Evaluation
- Research, Innovation and Extension
- Infrastructure and Learning Resources
- Student Support and Progression
- Governance, Leadership and Management
- Institutional Values and Best Practices.

INTERNAL ASSESSMENT

Continuous assessment of the students is done by the college through class tests, assignments, projects, presentations and other interactive learning activities. The students are required to pass in the internal assessment, failing which they are debarred from sitting in the end term examination.

ATTENDANCE

A minimum of 75% attendance is required for a student to be eligible to sit for the end term examination. Review of attendance is conducted every month by the concerned subject teachers and submitted to the Principal for consequent action.

REMEDIAL CLASSES

The college provides remedial classes to students who require extra learning assistance and also for those students with backlogs. The remedial classes have been initiated specifically to assist the slow learners who need more learning assistance, guidance and support. The remedial classes focus on helping students develop better study habits as well as to enhance their comprehension skills.

MENTORING CELL

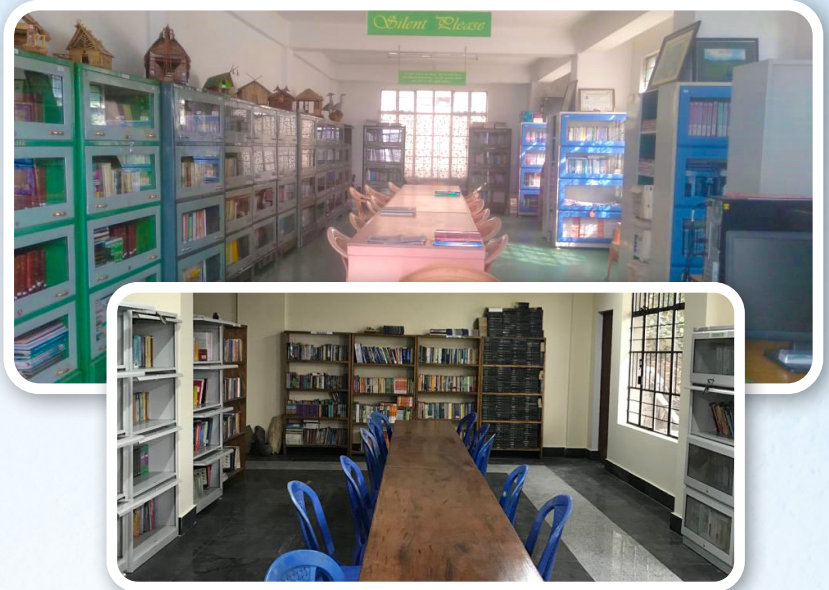
Mentoring is an innovative method of encouraging students to become responsible learners thereby empowering them to realize their full potential in their endeavour to achieve success. It is a practice where students are provided with beneficial instruction, inspiration and support. Keeping this in mind, the Capital College of Higher Education has also set up a mentoring cell to serve as a support system for students. Each of the faculty members have been assigned with a number of students who then looks after the progression of the students placed under his/her care.



LEARNING RESOURCES

LIBRARY

The College Library is well equipped which can meet the requirement of the teachers as well as the students in acquiring necessary information in the concerned subjects/courses. Important newspapers, magazines and professional journals from reputed publishers/journals are subscribed. Borrowing facilities are also extended to students provided they are registered with the college library and produce library cards. The Library contains more than 5000 books.



SEMINAR AND WORKSHOPS

Apart from the general courses prescribed by the University, the college periodically offers special classes relating to personality developments and professional job-oriented courses. Seminary programmes on relevant topics are conducted in order to acquaint the students better with their study materials. These programmes are addressed by resource persons from different fields. Attending these special classes is deemed as compulsory for all the students.



VISITING LECTURERS

From time to time, experts and professors from different institutions also provide extension lectures in different disciplines.



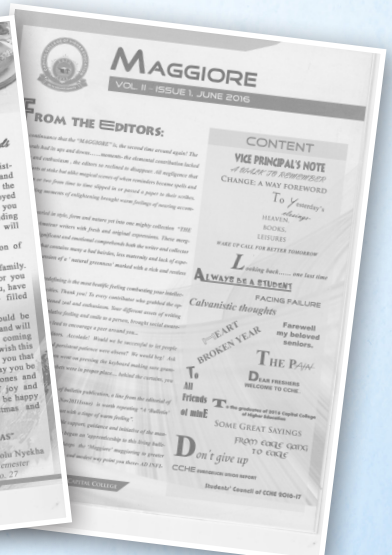
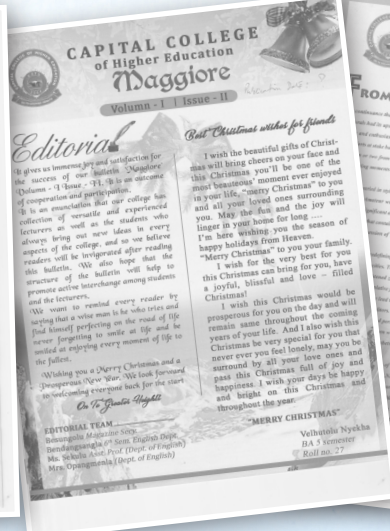
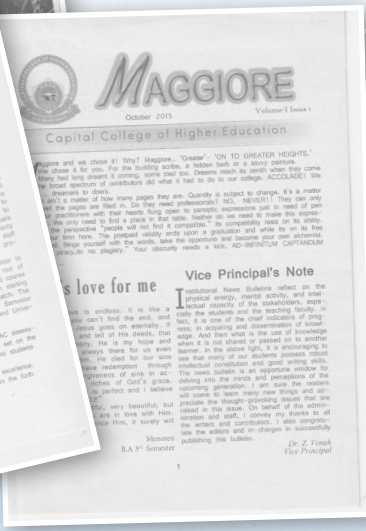
EDUCATIONAL TOURS/ EXPOSURE TRIPS

The college, from time to time, sponsors educational tours/ excursions to historical sites and places of national importance so as to expose the students to other intellectual and cultural environments.



MAGAZINE AND NEWS BULLETIN PUBLICATIONS

Publications of annual magazine and periodicals are a regular feature of college. These literary endeavours are pupil-centred and initiated by the students themselves. While it provides to the young learners the opportunity to develop a robust and critical approach to writing skills, they also reflect the mental aptitudes and worldview of the young generation.





SKILLS DEVELOPMENT & CAREER OPPORTUNITY

The college in collaboration with the Indianeers Skills Academy, a training partner of the National Skill Development Corporation (NSDC), provides Skill Development Course in Tourism and Marketing. Job placements are given to the young unemployed who undergo this three-month course. Students, particularly of 6th Semester are encouraged to take-up these courses. For more information, students/parents may contact the college office during office hours.



WRITING PROFICIENCY COURSE

The college in collaboration with CUE Academy, Centre of Writing Skills, Kohima offers Basic Academic Writing Course, which is a three month intensive writing programme to students who are interested in enhancing their writing proficiency. The classes are held twice a week after class hours. The course aims at helping students learn the basic conventions of different forms of writing.



CIVIL SERVICE COACHING PROGRAMME

The College in association with PrepSchool for civil services, provides a platform for students to receive quality coaching for civil services and competitive examinations. After graduating, the students are provided with an opportunity to begin preparing for civil services.





EXTRACURRICULAR AND EXTENSION ACTIVITIES

Extracurricular and Extension activities opportunities for students to learn the values of teamwork, individual and group responsibility, physical strength and endurance, competition, diversity, and a sense of culture and community. They help provide a channel for reinforcing the lessons learned in the classroom, offering students the opportunity to apply academic skills in a real-world context, and are thus considered part of a well-rounded holistic education. The importance of extracurricular activities then necessitates the availability of these activities to students. The Capital College of Higher Education provides such opportunities and activities to students through various committees.

NSS & RRC

The college is registered with the National Service Scheme (NSS) and Red Ribbon Club (NSACS), and from time to time, undertakes HIV/AIDS sensitization programmes and social service activities. The students are expected to get actively involved in such activities. Students registered with NSS and RRC avail opportunities for state sponsored and centrally sponsored educational tours to places of historical importance, participate in cultural-exchange programmes throughout the country, and visit institutions of national and international repute.



EVANGELICAL UNION (EU)

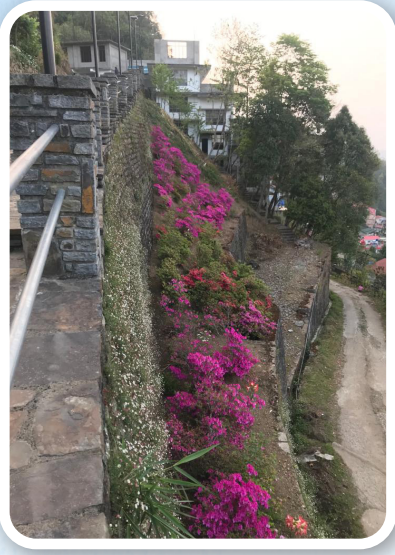
An important aspect that the college considers worthy of attention is the moral and spiritual development of the students. This is important in that the personality and character of a person is reflected by his/her moral standard. Hence, the college Evangelical Union strives to achieve this end. EU services during weekends are a regular feature of the college vocational activities.





ECO CLUB

As part of the curriculum, environmental awareness programme and protection, and conservation of the ecosystem forms an important aspect of both academic and co-curricular activity. Hence, to generate interest and sense of responsibility amongst the student committee, the college has established an Eco club which actively involves in tree plantation programmes, conservation and protection of ecosystems. The membership is voluntary though the benefits gained by a student in being a registered member and involvement in such programmes cannot be understated.



RESEARCH CELL

The College has established a Research Committee to promote a research culture among teachers and students. Its main focus areas are; to encourage the teachers to expand their horizons of knowledge in their own subject areas; to encourage teachers to update themselves with the latest innovative teaching-learning strategies; to provide students with an exposure and foundational guidance related to higher learning.

LITERARY COMMITTEE

The Literary Committee plays an important part in igniting the creativity of the students in various literary forms. It provides a platform where students can realize their hidden talents and skills. It organizes annual literary event with various competition items such as Essay, Poetry and Short Story Composition as well as art and photography besides others. It also engages in publishing the College Magazine.



WOMEN CELL

The Women Cell is meant to safe guard and promotethe well-being of all female students and teachers of the College. The cell organises various functions acquainting the women regarding their rights. The cell also organizes events to creates awareness among female students about hygiene habits and ensure a healthy atmosphere in and around college.



MUSIC/ARTS/PHOTOGRAPHY

The Music/Arts/Photography cell provides an opportunity to the students to develop talents in different forms of art like music, singing, dance, drama, Painting, Photography etc. It is a great stage for students to share their creativity, knowledge and passion to explore, learn and create.

GAMES AND SPORTS

The Games and Sports Committee actively engages in organizing annual sports event for both indoor and outdoor games. The committee aspires to inculcate qualities such as sportsmanship, team spirit and physical fitness. Hence, College Annual Games and Sports are a regular event. A multi complex facility is soon to be constructed in the permanent campus



ALUMNI ASSOCIATION

The Capital College formed the Alumni association to promote and maintain an inspiring relationship with the former students of the college. It seeks to build a bridge between the former and current students. The former students are encouraged to have a sense of belonging to the College while the current students receive motivation and inspiration from the seniors who have already passed out. The Alumni association occasionally organizes events and programmes to ensure that everyone stays connected.

PARENTS-TEACHERS ASSOCIATION

The Parent Teacher Association facilitates parental participation in the academic development of the students. It is desired that the parents / guardians of all the students become members of Association. At Capital College of Higher Education, Parents are viewed as key collaborators in the education of their wards or children and hence the association takes care of ensuring parental participation through meetings and other events.



ANTI-RAGGING COMMITTEE

The committee has been constituted to take actions and prevent any form of ragging within the college premises. Ragging is totally banned in the College and anyone found guilty of ragging and/or abetting ragging is liable to be punished as it is a criminal offence.



PHYSICAL INFRASTRUCTURE AND OTHER FACILITIES

Extracurricular and Extension activities opportunities for students to learn the values of teamwork, individual and group responsibility, physical strength and endurance, competition, diversity, and a sense of culture and community. They help provide a channel for reinforcing the lessons learned in the classroom, offering students the opportunity to apply academic skills in a real-world context, and are thus considered part of a well-rounded holistic education. The importance of extracurricular activities then necessitates the availability of these activities to students. The Capital College of Higher Education provides such opportunities and activities to students through various committees.

COLLEGE CAFETERIA

The college cafeteria is located on the ground floor of the main college building. The students are encouraged to avail good quality beverages and snacks that are made available for them.



SMART CLASSROOMS

The classrooms are equipped with smart board facility and all classrooms are Wi-Fi enabled.



SPECIALLY ABLED RAMPS

The College has a specially abled ramp and also separate washroom that is more accessible to them.



AMPHITHEATRE

The College has an amphitheatre with a seating capacity of 150 people.

STUDENT LOBBY

The Student Lobby is equipped with book shelves where they can keep their things safely and spend free time relaxing and reading.



LABORATORY

There are six laboratory made available for the science stream and a computer laboratory for both students and faculty. A chemical storage is also available to store and preserve the required chemicals to be used in the laboratory.

TRANSPORTATION

Daily bus transportation is provided to enable the students to have better access to the college. A nominal fee as bus-fare is charged.





HOSTEL

The college provides hostels for girls with necessary facilities. Students willing to abide by the rules laid down for the hostel may obtain hostel admission form on payment of Rs. 20 from the college office.



STUDENT SUPPORT SERVICES



STUDENTS COUNSELING SERVICES

The college has signed an MOU with Centre for Integrated Counselling Services (CICS) to ensure that students receive psychological and emotional support.

STUDENTS' WELFARE SCHEME

The Students Welfare Scheme, introduced in 2015, was initiated in order to provide assistance to economically weak but sincere and hardworking students. The following features are available under the scheme:

- 100% Remission of Admission awarded to economically weak students of 4th & 6th Semesters
- Pre-condition: Students should be regular in class and sincere in studies.

AWARDS

In order to encourage students to excel in their endeavours, the following awards are handed out annually to deserving students.

- Best Attendance (Cash Award)
- Best Discipline (Certificate & Gift Package)
- Best Academic Performance (Certificate & Gift Package)
- Student of the Year Award (Cash and Certificate)

STUDENTS' GRIEVANCE REDRESS CELL

The Students' Grievance Redress Cell was initiated with the sole purpose of receiving feedback as well as complaints that students may have in the college.



FACULTY PROFILE

Sl. No	Name	Educational Qualification	Department	Designation
1.	Dr. Zokho Venuh	M.A, M.Phil, Ph.D	History	Principal
2.	Mr. Vevohü Kezo	M.Sc	Zoology	Vice-Principal
3.	Dr. Rukulu Kezo Puro	M.A, M.Phil, Ph.D, PGCTE	English	Head
4.	Mrs. Tatongkala Lemtur Lohe	M.A, M.Phil	English	Assistant Professor & Dean of Students
5.	Mrs. Opanngmenla Jamir	M.A, B.Ed	English	Assistant Professor & IQAC Coordinator
6.	Mr. Temsuwapang Lkr.	M.A	History	Head
7.	Ms. Kumuni Keppen	M.A, FIP	History	Assistant Professor
8.	Mr. Niekhoto Chürhah	M.A	History	Assistant Professor
9.	Mrs. Chubarenla Lkr.	M.A, NET	Political Science	Head
10.	Ms. Wangshimongla Aier	M.A, NET	Political Science	Assistant Professor
11.	Ms. Meyiepeo Koza	M.A NET	Political Science	Assistant Professor
12.	Mrs. Kevivonu Zhotso Chishi	M.A, FIP	Sociology	Head
13.	Mrs. Abeino Zashü	M.A, NET	Sociology	Assistant Professor
14.	Mr. Vizoboto Zhotso	M.A	Sociology	Assistant Professor
15.	Mr. Theja Lohe	M.A, FIP	Tenyidie	Head
16.	Mr. Khrielakuo Kets	M.A, B.Ed	Tenyidie	Assistant Professor
17.	Ms. Shedülü Kezo	M.A, B.Ed, M.Ed, NET, FIP	Education	Assistant Professor
18.	Ms. Akangjungla Kichu	M.A, NET, FIP	Economics	Assistant Professor
19.	Dr. Kadunlung Gamei	M.Sc, PhD	Botany	Assistant Professor
20.	Mr. Pyonpamo	M.Sc	Chemistry	Assistant Professor
21.	Mrs. Nourhevinuo Kesiezie	M.Sc, NET	Zoology	Assistant Professor

VISITING LECTURERS PROFILE

Sl. No	Name	Educational Qualification	Designation
1.	Ms. Vezolü Puro	M.A, NET,	Research Scholar, IIIT Kurnool, Andhra Pradesh
2.	Ms. Sekulü Nienu	M.A, B.Ed, M.Ed, JRF NET, PhD Research Scholar	Asst. Professor, MCTE
	Dr. Abhijit Borah	M.Sc, PhD, JRF-NET	Retd. Associate Professor
4.	Mr. M.N Murali	M.Sc, NET	Retd. Associate Professor
5.	Dr. Wenyitso Kapfo	M.Sc, PhD,	Associate Professor, Kohima Science College
6.	Dr. Vethselo Doulo	M.Sc, PhD	Associate Professor, Kohima Science College
7.	Mr. Kenneth Punyü	M.Sc	Associate Professor, Kohima Science College
8.	Dr. Khrietuo Doulo	M.Sc, PhD, JRF-NET	Retd. Associate Professor



COLLEGE RULES AND REGULATIONS

1. As per the Nagaland University rules, a student is required to have minimum attendance of 75%.
2. Leave of absence will not be entertained during examination.
3. No refund of fees under any circumstance once admission has been granted.
4. Monthly tuition fees should be paid before the 15th of every month, failing which a sum of Rs. 5 /- per day will be charged as late fine.
5. No transfer certificate will be issued unless 12 months tuition fee and other dues are cleared.
6. Misbehaviour towards faculty members will result in expulsion from the college.
7. Disciplinary actions in the form of fines may be imposed by the college administration whenever and wherever relevant.
8. Any damage to college property shall have to be compensated by the student(s) concerned.
9. Students shall not speak in Nagamese within the college campus.
10. Students whose parents are not residing in Kohima must keep a local guardian.
11. The Students' Council and its activities shall strictly remain subordinate to the authority of the College Principal.
12. No tribal union or any other organization other than Students' Council will be allowed to form.
13. Disciplinary action shall be taken against students found using any form of intoxicants within college premises or during college activities.
14. Students shall not come to college in shorts or miniskirts, and discourage students using artificial dye on hair within college campus. Students should at all times wear decent cloths and adhere to rules and resolutions passed by the college from time to time in this regard.
15. If any problem arises concerning the students, the case will be settled with the legal guardian, and the decision of the college authority will be final.
16. College uniform is worn from Monday to Thursday and on any important occasion of the college.
17. Admission is granted subject to acceptance of the above rules.
18. The college is a tobacco free zone.



ACADEMIC CALENDAR 2024-25(Tentative)

Sl No	Event	Date/Period
1	Reopening of the college	1 st of July 2024
2	Course Orientation for BA/BSc 1 st Semester	3 rd of July 2024
3	Commencement of Classes for all Semesters	4 th of July 2024
4	Assignment/Presentation	17 th July – 31 st Aug. 2024
5	Orientation for NSS & RRC	29 th July 2024
6	Freshers' Day	3 rd Aug 2024
7	Social Work	9 th Aug 2024
8	College Foundation Day	20 th Aug 2024
9	Internal Test	11- 16 th Sept. 2024
10	Sports Week	9-11 th March 2024
11	Seminar/Workshop/Career Guidance	2 nd Sept. 2024
12	NU Foundation Day	6 th Sept. 2024
13	Submission of Internal Marks	30 th Sept. 2024
14	Internal Assessment Result Declaration	1 st Week of Oct. 2024
15	Filling of Examination Form for all Semesters	1 st Week of Oct. 2024
16	Odd Semester Examinations (NU)	1 st Week of Nov. 2024
17	NSS Special Camp	2 nd Week of Oct. 2024
18	Provisional Result of Odd Semesters	1 st Week of Dec. 2024
19	Admission to BA/BSc 2 nd ,4 th , & 6 th Semesters	1 st Week of Dec. 2024
20	Winter Break	16 th Dec. 2024 to 14 Jan. 2025
21	College Reopening	Jan. 15, 2025
22	Course Orientation	17 th Jan. 2025
23	Commencement of Regular Classes	18 th Jan. 2025
24	Parents/Teachers Meeting	1 st Week of Feb. 2025
25	Assignment/Presentation	1 st – 28 th Feb. 2025
26	Literary Day	2 nd Week of Feb. 2025
27	Internal Test	1 st Week of March 2025
28	Submission of Internal Marks	30 th March 2025
29	Selection Result Declaration	2 nd April 2025
30	Filling of Examination Forms for all Semesters	2 nd Week of April 2025
31	Even Semester Examinations (NU)	1 st Week of May 2025
32	Result Declaration of BA/BSc 2 nd Semester	10 th June 2024, 2025
33	Admission to BA/BSc 3 rd & 5 th Semesters	11 th – 14 th June 2025
34	Semester Beak (Summer)	15 th - 30 th June 2025
35	New Admission to BA/BSc 1 st Semester	1 st July 2025
36	College Reopening	3 rd July 2025
37	Course Orientation for all Semesters	5 th July 2025
38	Commencement of Regular Classes	6 th July 2025



College Anthem

**In the heart of the Capital
Capital College solemnly stands
As a shining light beckoning
Softly and tenderly
For those who thirst and hunger
For wisdom and knowledge
From afar and near
From the hills and beyond.
With God as the Alpha and Omega
With hearts laden with our hopes and dreams
We will climb *Onto Greater Heights.***

**Words by *Dr. Rukulü K.Puro*
Music Arranged by
*Mr. Theja Lohe and Khrielakuo Kets***



CAPITAL COLLEGE OF HIGHER EDUCATION
PROSPECTUS 2024-25