

**CAPITAL COLLEGE OF HIGHER EDUCATION**  
*(Affiliated to Nagaland University)*



**PROSPECTUS**  
**2023-24**

*“Onto  
Greater  
Heights”*





# ~ CONTENTS ~

<b>PRINCIPAL'S MESSAGE</b>	<b>1</b>
<b>PROFILE OF THE COLLEGE</b>	<b>2-3</b>
<b>COURSE DESIGN AND STRUCTURE</b>	<b>4-6</b>
<b>ADMISSION PROCEDURE AND FEE STRUCTURE</b>	<b>7</b>
<b>QUALITY CONTROL</b>	<b>8</b>
<b>LEARNING RESOURCES</b>	<b>9-11</b>
<b>EXTRACURRICULAR/EXTENSION ACTIVITIES</b>	<b>12-14</b>
<b>PHYSICAL INFRASTRUCTURE AND OTHER FACILITIES</b>	<b>15-17</b>
<b>STUDENTS SUPPORT SERVICES</b>	<b>17</b>
<b>FACULTY &amp; GOVERNING BODY PROFILE</b>	<b>18-19</b>
<b>COLLEGE RULES AND REGULATIONS</b>	<b>19</b>
<b>ACADEMIC CALENDAR 2023-24</b>	<b>20</b>
<b>COLLEGE ANTHEM</b>	<b>21</b>





# PRINCIPAL'S *Message*

The prospectus is the mirror image of an institution; its history, aims and vision, programmes and courses offered and the quality of teaching faculty and staff, infrastructure and learning resources available, and aspects of quality control that are in place. Keeping these things in mind I introduce to the reader the prospectus of our college for the Academic Session 2023-24.

Capital College of Higher Education (CCHE) was established in 2004, and the 1st academic session began in 2005 with only five students. So far, fifteen batches have graduated from the college. In order to provide the most effective and motivating teaching-learning experience to the students, the college maintains a student-teacher ratio of about 10:1. Even though separate campuses are maintained for arts and science streams; the infrastructure, equipments, and other resources available for effective delivery of the curriculum are second to none

From a very humble beginning, the college has now developed into a vibrant and progressive institution providing various academic programmes and skill oriented courses in order to equip the young learners to successfully face the various challenges of contemporary times and to ultimately find their place in this competitive world. Not only in academics, but also in many extracurricular activities at inter-college, university and state levels, many of our students have excelled and won many laurels. The college also gives much care to the development of personality and character of the students by providing ample opportunities in co-curricular activities to every student as well as counselling services. I am proud to say that many of our students have become responsible and productive citizens. Hence, any student who decides to enrol in this college has taken the correct decision in the pursuit of higher studies. The college administration, staff, and the teaching faculty welcome each and everyone to the family of Capital College of Higher Education.

**Dr. Zokho Venuh**

*Principal*





# PROFILE OF THE COLLEGE

## BACKGROUND

Capital College of Higher Education (CCHE), established in 2004, is permanently affiliated to Nagaland University. The College is sponsored by National Academy Society. The college is also recognized by the University Grants Commission (UGC) under Art. 2(f) & 12(B) of the UGC Act of 1956. The college offers Bachelor of Arts (Honours) programme in four subjects and Bachelor of Arts (General). From the academic session 2021-22, the college has introduced new programmes- Bachelor of Science (Honours) in five disciplines and Bachelor of Science (General). In the learning process, the college considers it to be imperative that the students excel in their quest for knowledge. In order to achieve this, the college provides an excellent environment for academic pursuit by imparting total quality education by experienced, qualified, and committed teachers. As of now, fifteen batches have graduated, and the college takes pride in seeing many of its alumni successful in different walks of life.







## LOCATION

The college presently has two campuses. The permanent campus is located at Thegaba, Phezhu, Jotsoma which is at a walking distance from Kohima Town. Presently, the permanent campus houses the Science Programme. The other campus which houses the arts Programme is located in the heart of the capital town below the State Library, and within walking distance from PHQ Junction, P.R.Hill. The environment of the college is congenial and conducive for study in terms of immediate access to transportation, medical aid, communication,



## VISION

The long term vision is to make the college one of the premier higher education institutions in the state. Driven with a strong belief in holistic education, encompassing; academics, co-curricular activities, sports education and life-skills learning, the College endeavours to bring about an all-round development in the students. The College is driven with the vision to equip the students to achieve success as well as build the character and confidence to press onto greater heights and become contributing citizens in the society.

## AIMS AND OBJECTIVES OF THE COLLEGE

The object of CCHE is to promote knowledge in the spheres of teaching and learning, research, promote interdisciplinary and multidisciplinary studies, and to disseminate education to the masses as well. The objectives and aims of the college are:

1. Impart quality education to students by developing skill, competence, and in-depth understanding in their field of study; both at the theoretical and practical levels.
2. Develop awareness at local, national, and global levels in order to keep pace with the changing times.
3. Strive for knowledge, wisdom and values that benefit and bear relevance to society.
4. Mould the students to be responsible citizens.

## COLLEGE TIMING

The Classes start from 8:20AM and continues till 3:30PM



# COURSE DESIGN AND STRUCTURE

The Bachelor's Degree Programme in Arts and Science is a three-year programme spread over six semesters. The minimum duration for the completion of the course is three years (six semesters) and the maximum duration is five years (ten semesters). Tentatively, the odd semesters shall be from June to November while the even semesters shall be from December to May. Each semester shall have class tests, internal assessment activities and end term examinations with a weightage ratio of 25:75, 40% being the pass mark for both internal and external exam. The course evaluation for the first, second, third and fifth semesters (both internal and external) shall be conducted within the College while the external evaluation for the fourth and sixth semesters shall be conducted by the University.

## INTRODUCTION TO CBCS

Introduced by the University Grants Commission (UGC), the Choice-Based Credit System (CBCS) is a “learner-centric approach” that seeks to make education more meaningful and relevant to students as they strive forward to achieve success in life. It is an approach that has been conceptualized to enhance the growth of students, both on the professional level as well as enhance personal growth. It provides a platform where students are allowed to choose subjects of their own interest and preferences. Following the recommendation of UGC regarding the introduction of the CBCS system in all the affiliated colleges, the College has also gladly introduced the system. The College firmly believes that this CBCS system will enable our students to explore the broad avenues of learning and thereby empower themselves so as to enlighten and brighten the society.

## BACHELOR OF ARTS AND BACHELOR OF SCIENCE (HONOURS AND GENERAL)

The core subjects/courses offered and elective papers available are based on Nagaland University guidelines and provisions.

BA/B.Sc HONOURS COURSE STRUCTURE					
Semesters	Core Course	Ability Enhancement Compulsory Course (AECC)	Skill Enhancement Course (SEC)	Discipline Specific Elective (DSE)	Generic Elective (GE)
1	C 1	English/ MIL Communication			GE - 1
	C 2				
2	C 3	Environmental Studies			GE - 2
	C 4				
3	C 5		SEC -1		GE - 3
	C 6				
	C 7				
4	C 8		SEC -2		GE - 4
	C 9				
	C 10				
5	C 11			DSE- 1	
	C 12			DSE- 2	
6	C 13			DSE- 3	
	C 14			DSE- 4	



### BA PASS COURSE STRUCTURE

Semesters	Core Course	Ability Enhancement Compulsory Course (AECC)	Skill Enhancement Course (SEC)	Discipline Specific Elective (DSE)	Generic Elective (GE)
1	English 1	English Communication/ MIL Communication			
	DSC 1A				
	DSC 2A				
2	Alt. Eng. 1/ MIL1	Environmental Studies			
	DSC 1B				
	DSC 2B				
3	English 2		SEC -1		
	DSC 1C				
	DSC 2C				
4	Alt. Eng 2/ MIL 2		SEC -2		
	DSC 1D				
	DSC 2D				
5			SEC - 3	DSE- 1	GE - 1
				DSE- 2	
6			SEC - 4	DSE- 3	GE - 2
				DSE- 4	

### B.Sc PASS COURSE STRUCTURE

Semesters	Core Course	Ability Enhancement Compulsory Course (AECC)	Skill Enhancement Course (SEC)	Discipline Specific Elective (DSE)	Generic Elective (GE)
1	DSC 1A	English Communication/ MIL Communication			
	DSC 2A				
	DSC 3A				
2	DSC 1B	Environmental Studies			
	DSC 2B				
	DSC 3B				
3	DSC 1C		SEC -1		
	DSC 2C				
	DSC 3C				
4	DSC 1D		SEC -2		
	DSC 2D				
	DSC 3D				
5			SEC - 3	DSE- 1A	
				DSE- 2A	
				DSE- 3A	
6			SEC - 4	DSE- 1B	
				DSE- 2B	
				DSE- 3B	





## OUTLINE OF CBCS COURSE

A Core Course means which should compulsorily be studied by a candidate.

An Elective Course is generally a course which can be chosen from a pool of courses and which may be very specific or specialized or advanced or supportive to the discipline/subject of study or which provides an extended scope or which enables an exposure to some other discipline/subject is called an Elective Course.

Discipline Specific Elective (DSE) Courses are elective courses may be offered by the main discipline/subject of study is referred to as Discipline Specific Elective.

Generic Elective (GE) Course is a course chosen generally from an unrelated discipline/subject, with an intention to seek exposure is called a Generic Elective.

Dissertation/Project: In order to acquire special/advanced knowledge, such as supplement study/support study for a discipline /subject, a student may be made to undertake such a course on his own with an advisory support by a teacher/faculty member.

Ability Enhancement Compulsory Courses (AECC) are the courses based upon the content that leads to knowledge enhancement; i. Environmental Science and ii. English/MIL Communication which are mandatory for all disciplines.

Skill Enhancement Courses are value-based and/or skill-based and are aimed at providing hands-on-training, competencies, skills, etc. These courses may be chosen from a pool of courses designed to provide value-based and/or skill-based knowledge.

## PROGRAMS AND COURSES

### **Bachelor of Arts (Pass/General)**

- Economics
- Education
- History
- Political Science
- Sociology
- Tenyidie

### **Bachelor of Arts (Honours)**

- English
- History
- Political Science
- Sociology

### **Bachelor of Science(Pass/General)**

- Botany
- Chemistry
- Mathematics
- Physics
- Zoology

### **Bachelor of Science (Honours)**

- Botany
- Chemistry
- Mathematics
- Physics
- Zoology

## ELIGIBILITY CRITERIA

An applicant wishing to take up an honours subject should fulfil the following conditions:

- 1) 45% in the subject in which one desires to take up honours.
- 2) 45% in Biology to take up honours in Botany or Zoology.
- 3) For Botany and Zoology honours, Chemistry must be an elective subject.
- 4) For Chemistry honours, one must pass Mathematics at Class XII level.





# ADMISSION PROCEDURE AND FEE STRUCTURE

Application form alongwith the prospectus can be procured from the college office on working days during working hours on payment of Rs. 200(Rupees Two Hundred) only. In addition to the screening of the applications and relevant documents, admission may be granted on merit basis or interview undertaken.

## DOCUMENTS REQUIRED AT THE TIME OF ADMISSION

1. Original & 3 photocopies of HSLC & HSSLC marksheet& admit card, alongwith original copy of HSSLC (NBSE) registration card
2. Transfer/Pass Certificate from previous college/school
3. No Objection Certificate (NOC) from the Nagaland University for those coming from other colleges
4. Migration Certificate in case the applicant is from outside the NBSE/Nagaland University
5. Attested photocopy of ST and Indigenous Certificate for BA/BSc1st Semester
6. 5 copies of recent colour passport size photograph

☎ 8974459225 / 9436645272 ✉ cchekohima@gmail.com 🌐 www.capitalcollege.edu.in

## FEE STRUCTURE

### BACHELOR OF ARTS

Sl. No.	Fee	Amount
1	Admission	Free
2	University Registration, Enrolment, Library Development, Internal Examination, Establishment, IQAC, Identity Card, Games and Sports, Magazine, Fresher's & Parting Social, Uniform & Notebooks, Literary activities, Seminar /Workshops.	₹ 11,350/-
3	Security Deposit	₹ 2,000/-

### BACHELOR OF SCIENCE

Sl. No.	Fee	Amount
1	Admission	Free
2	University Registration, Enrolment, Library Development, Internal Examination, Establishment, IQAC, Identity Card, Games and Sports, Magazine, Fresher's & Parting Social, Uniform & Notebooks, Literary activities, Seminar /Workshops.	₹ 11,350/-
3	Laboratory Fee	₹ 7,500/-
4	Security Deposit	₹ 2,000/-

### MONTHLY TUITION FEE

Sl. No.	Fee	Amount
1	B.A (Pass/General)	₹ 1,300/-
2.	B.A Honours	₹ 1,500/-
3.	B.Sc. (Pass/Honours)	₹ 2,000/-



# QUALITY CONTROL

## IQAC

The Internal Quality Assurance Cell (IQAC) is the central quality monitoring body of the institution. The primary aim of IQAC is to ensure that the institution continues to strive towards excellence in all academic and administrative spheres. Consisting of the Coordinator, Principal, Heads of all departments and nominated members from the College, the IQAC functions as a cell that continuously monitors the institutional practices and suggest measures for achieving quality in the institution.

The institutional aspects that the IQAC monitors are;

- Curricular Aspects
- Teaching-Learning and Evaluation
- Research, Innovation and Extension
- Infrastructure and Learning Resources
- Student Support and Progression
- Governance, Leadership and Management
- Institutional Values and Best Practices.

## INTERNAL ASSESSMENT

Continuous assessment of the students is done by the college through class tests, assignments, projects, presentations and other interactive learning activities. The students are required to pass in the internal assessment, failing which they are debarred from sitting in the end term examination.

## ATTENDANCE

A minimum of 75% attendance is required for a student to be eligible to sit for the end term examination. Review of attendance is conducted every month by the concerned subject teachers and submitted to the Principal for consequent action.

## REMEDIAL CLASSES

The college provides remedial classes to students who require extra learning assistance and also for those students with backlogs. The remedial classes have been initiated specifically to assist the slow learners who need more learning assistance, guidance and support. The remedial classes focus on helping students develop better study habits as well as to enhance their comprehension skills.

## MENTORING CELL

Mentoring is an innovative method of encouraging students to become responsible learners thereby empowering them to realize their full potential in their endeavour to achieve success. It is a practice where students are provided with beneficial instruction, inspiration and support. Keeping this in mind, the Capital College of Higher Education has also set up a mentoring cell to serve as a support system for students. Each of the faculty members have been assigned with a number of students who then looks after the progression of the students placed under his/her care.

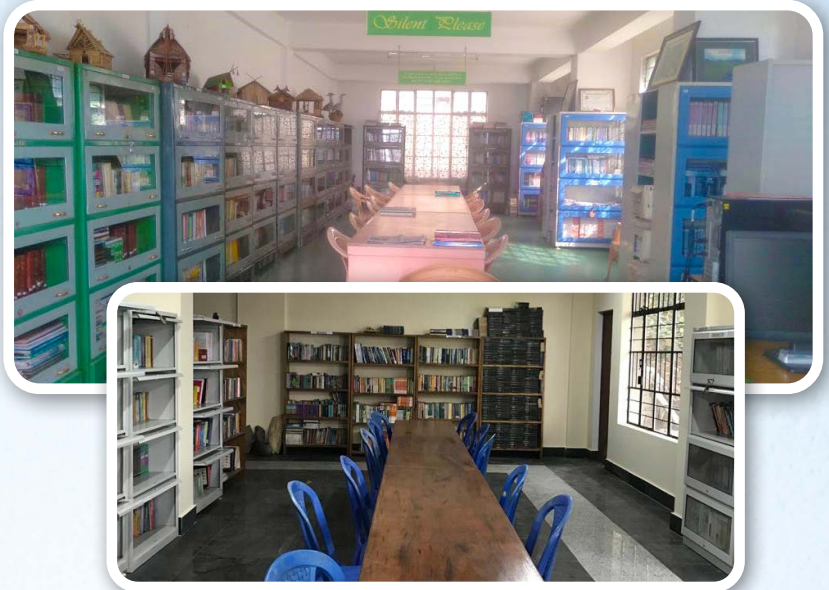




# LEARNING RESOURCES

## LIBRARY

The College Library is well equipped which can meet the requirement of the teachers as well as the students in acquiring necessary information in the concerned subjects/courses. Important newspapers, magazines and professional journals from reputed publishers/journals are subscribed. Borrowing facilities are also extended to students provided they are registered with the college library and produce library cards. The Library contains more than 5000 books.



## SEMINAR AND WORKSHOPS

Apart from the general courses prescribed by the University, the college periodically offers special classes relating to personality developments and professional job-oriented courses. Seminary programmes on relevant topics are conducted in order to acquaint the students better with their study materials. These programmes are addressed by resource persons from different fields. Attending these special classes is deemed as compulsory for all the students.



## VISITING LECTURERS

From time to time, experts and professors from different institutions also provide extension lectures in different disciplines.





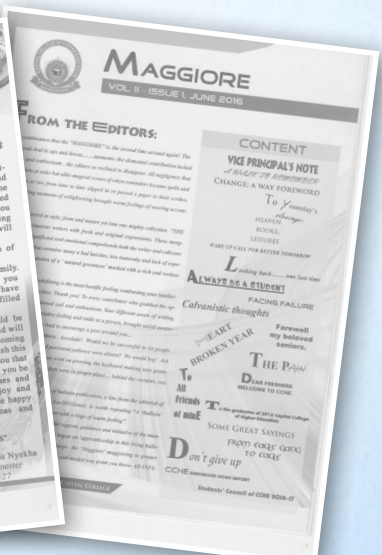
## EDUCATIONAL TOURS/ EXPOSURE TRIPS

The college, from time to time, sponsors educational tours/ excursions to historical sites and places of national importance so as to expose the students to other intellectual and cultural environments.



## MAGAZINE AND NEWS BULLETIN PUBLICATIONS

Publications of annual magazine and periodicals are a regular feature of college. These literary endeavours are pupil-centred and initiated by the students themselves. While it provides to the young learners the opportunity to develop a robust and critical approach to writing skills, they also reflect the mental aptitudes and worldview of the young generation.







## SKILLS DEVELOPMENT & CAREER OPPORTUNITY

The college in collaboration with the Indianeers Skills Academy, a training partner of the National Skill Development Corporation (NSDC), provides Skill Development Course in Tourism and Marketing. Job placements are given to the young unemployed who undergo this three-month course. Students, particularly of 6<sup>th</sup> Semester are encouraged to take-up these courses. For more information, students/parents may contact the college office during office hours.



## WRITING PROFICIENCY COURSE

The college in collaboration with CUE Academy, Centre of Writing Skills, Kohima offers Basic Academic Writing Course, which is a three month intensive writing programme to students who are interested in enhancing their writing proficiency. The classes are held twice a week after class hours. The course aims at helping students learn the basic conventions of different forms of writing.

## CIVIL SERVICE COACHING PROGRAMME

The College in association with PrepSchool for civil services, provides a platform for students to receive quality coaching for civil services and competitive examinations. After graduating, the students are provided with an opportunity to begin preparing for civil services.







# EXTRACURRICULAR AND EXTENSION ACTIVITIES

Extracurricular and Extension activities opportunities for students to learn the values of teamwork, individual and group responsibility, physical strength and endurance, competition, diversity, and a sense of culture and community. They help provide a channel for reinforcing the lessons learned in the classroom, offering students the opportunity to apply academic skills in a real-world context, and are thus considered part of a well-rounded holistic education. The importance of extracurricular activities then necessitates the availability of these activities to students. The Capital College of Higher Education provides such opportunities and activities to students through various committees.

## NSS & RRC

The college is registered with the National Service Scheme (NSS) and Red Ribbon Club (NSACS), and from time to time, undertakes HIV/AIDS sensitization programmes and social service activities. The students are expected to get actively involved in such activities. Students registered with NSS and RRC avail opportunities for state sponsored and centrally sponsored educational tours to places of historical importance, participate in cultural-exchange programmes throughout the country, and visit institutions of national and international repute.



## EVANGELICAL UNION (EU)

An important aspect that the college considers worthy of attention is the moral and spiritual development of the students. This is important in that the personality and character of a person is reflected by his/her moral standard. Hence, the college Evangelical Union strives to achieve this end. EU services during weekends are a regular feature of the college vocational activities.

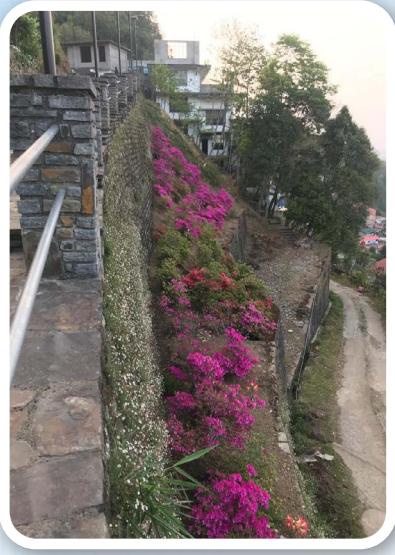






## ECO CLUB

As part of the curriculum, environmental awareness programme and protection, and conservation of the ecosystem forms an important aspect of both academic and co-curricular activity. Hence, to generate interest and sense of responsibility amongst the student committee, the college has established an Eco club which actively involves in tree plantation programmes, conservation and protection of ecosystems. The membership is voluntary though the benefits gained by a student in being a registered member and involvement in such programmes cannot be understated.



## RESEARCH CELL

The College has established a Research Committee to promote a research culture among teachers and students. Its main focus areas are; to encourage the teachers to expand their horizons of knowledge in their own subject areas; to encourage teachers to update themselves with the latest innovative teaching-learning strategies; to provide students with an exposure and foundational guidance related to higher learning.

## LITERARY COMMITTEE

The Literary Committee plays an important part in igniting the creativity of the students in various literary forms. It provides a platform where students can realize their hidden talents and skills. It organizes annual literary event with various competition items such as Essay, Poetry and Short Story Composition as well as art and photography besides others. It also engages in publishing the College Magazine.



## WOMEN CELL

The Women Cell is meant to safe guard and promotethe well-being of all female students and teachers of the College. The cell organises various functions acquainting the women regarding their rights. The cell also organizes events to creates awareness among female students about hygiene habits and ensure a healthy atmosphere in and around college.





## MUSIC/ARTS/PHOTOGRAPHY

The Music/Arts/Photography cell provides an opportunity to the students to develop talents in different forms of art like music, singing, dance, drama, Painting, Photography etc. It is a great stage for students to share their creativity, knowledge and passion to explore, learn and create.

## GAMES AND SPORTS

The Games and Sports Committee actively engages in organizing annual sports event for both indoor and outdoor games. The committee aspires to inculcate qualities such as sportsmanship, team spirit and physical fitness. Hence, College Annual Games and Sports are a regular event. A multi complex facility is soon to be constructed in the permanent campus



## ALUMNI ASSOCIATION

The Capital College formed the Alumni association to promote and maintain an inspiring relationship with the former students of the college. It seeks to build a bridge between the former and current students. The former students are encouraged to have a sense of belonging to the College while the current students receive motivation and inspiration from the seniors who have already passed out. The Alumni association occasionally organizes events and programmes to ensure that everyone stays connected.

## PARENTS-TEACHERS ASSOCIATION

The Parent Teacher Association facilitates parental participation in the academic development of the students. It is desired that the parents / guardians of all the students become members of Association. At Capital College of Higher Education, Parents are viewed as key collaborators in the education of their wards or children and hence the association takes care of ensuring parental participation through meetings and other events.



## ANTI-RAGGING COMMITTEE

The committee has been constituted to take actions and prevent any form of ragging within the college premises. Ragging is totally banned in the College and anyone found guilty of ragging and/or abetting ragging is liable to be punished as it is a criminal offence.





# PHYSICAL INFRASTRUCTURE AND OTHER FACILITIES

Extracurricular and Extension activities opportunities for students to learn the values of teamwork, individual and group responsibility, physical strength and endurance, competition, diversity, and a sense of culture and community. They help provide a channel for reinforcing the lessons learned in the classroom, offering students the opportunity to apply academic skills in a real-world context, and are thus considered part of a well-rounded holistic education. The importance of extracurricular activities then necessitates the availability of these activities to students. The Capital College of Higher Education provides such opportunities and activities to students through various committees.

## COLLEGE CAFETERIA

The college cafeteria is located on the ground floor of the main college building. The students are encouraged to avail good quality beverages and snacks that are made available for them.



## SMART CLASSROOMS

The classrooms are equipped with smart board facility and all classrooms are Wi-Fi enabled.



## SPECIALLY ABLED RAMPS

The College has a specially abled ramp and also separate washroom that is more accessible to them.



### **AMPHITHEATRE**

The College has an amphitheatre with a seating capacity of 150 people.

### **STUDENT LOBBY**

The Student Lobby is equipped with book shelves where they can keep their things safely and spend free time relaxing and reading.



### **LABORATORY**

There are six laboratory made available for the science stream and a computer laboratory for both students and faculty. A chemical storage is also available to store and preserve the required chemicals to be used in the laboratory.

### **TRANSPORTATION**

Daily bus transportation is provided to enable the students to have better access to the college. A nominal fee as bus-fare is charged.







## HOSTEL

The college provides hostels for girls with necessary facilities. Students willing to abide by the rules laid down for the hostel may obtain hostel admission form on payment of Rs. 20 from the college office.



## STUDENT SUPPORT SERVICES



### STUDENTS COUNSELING SERVICES

The college has signed an MOU with Centre for Integrated Counselling Services (CICS) to ensure that students receive psychological and emotional support.

### STUDENTS' WELFARE SCHEME

The Students Welfare Scheme, introduced in 2015, was initiated in order to provide assistance to economically weak but sincere and hardworking students. The following features are available under the scheme:

- 100% Remission of Admission awarded to economically weak students of 4th & 6th Semesters
- Pre-condition: Students should be regular in class and sincere in studies.

### AWARDS

In order to encourage students to excel in their endeavours, the following awards are handed out annually to deserving students.

- Best Attendance (Cash Award)
- Best Discipline (Certificate & Gift Package)
- Best Academic Performance (Certificate & Gift Package)
- Student of the Year Award (Cash and Certificate)

### STUDENTS' GRIEVANCE REDRESS CELL

The Students' Grievance Redress Cell was initiated with the sole purpose of receiving feedback as well as complaints that students may have in the college.



# FACULTY PROFILE

Sl. No.	NAME	DEPARTMENT	DESIGNATION
1	Dr. Zokho Venuh, M.A., M.Phil., Ph.D.	History	Principal
2	Mr. Vevohu Kezo, M.Sc.	Zoology	Vice Principal
3	Dr. Rukulu Kezo Puro, M.A., M.Phil., Ph.D., PGCTE	English	Lecturer & HoD
4	Mrs. Tatongkala Lemtur Lohe, M.A., M.Phil.	English	Lecturer
5	Mrs. Opangmenla Jamir, M.A., B.Ed.	English	Lecturer
6	Ms. Sekulu Nienu, M.A., B.Ed., M.Ed., JRF-NET	English	Lecturer
7	Mr. Temsuwapang Longkumer, M.A.	History	Lecturer & HoD
8	Ms. Kumuni Keppen, M.A.	History	Lecturer
9	Mr. Niekhoto Chürhah, M.A.	History	Lecturer
10	Mrs. Chubarenla Longkumer, M.A., NET	Political Science	Lecturer & HoD
11	Ms. Kinitoli Saghu, M.A., NET, FIP	Political Science	Lecturer
12	Mr. Hukuyi, M.A., NET	Political Science	Lecturer
13	Mrs. Kevivonu Zhotso Chishi, M.A.	Sociology	Lecturer & HoD
14	Mrs. Abeino Zashü, M.A.	Sociology	Lecturer
15	Mr. Vizoboto Zhotso, M.A.	Sociology	Lecturer
16	Mr. Theja Lohe, M.A.	Tenyidie	Lecturer & HoD
17	Mr. Khrielakuo, M.A., B.Ed	Tenyidie	Lecturer
18	Ms. Shedulu Kezo, M.A., B.Ed., M.Ed., NET	Education	Lecturer
19	Ms. Akangjungla, M.A., NET	Economics	Lecturer
20	Dr. Kadunlung Gamei, M.Sc., Ph.D.	Botany	Lecturer
21	Mr. Pyonphamo, M.Sc.	Chemistry	Lecturer
22	Ms. Nourhevinuo, M.Sc., NET	Zoology	Lecturer
23	Ms. Vezolu Puro, M.A., NET, Research Scholar	English	Visiting Lecturer
24	Dr. Abhijit Borah, M.Sc., Ph.D., JRF-NET (Assoc. Prof. Retired)	Physics	Visiting Lecturer
25	Mr. M. N. Murali, M.Sc., NET (Assoc. Prof. Retired)	Mathematics	Visiting Lecturer
26	Dr. Wenytso Kapfo, M.Sc., Ph.D. (Assoc. Prof.)	Botany	Visiting Lecturer
27	Dr. Vethselo Doulo, M.Sc., Ph.D. (Assoc. Prof.)	Zoology	Visiting Lecturer
28	Mr. Kenneth Punyü, M.Sc. (Assoc. Prof.)	Chemistry	Visiting Lecturer
29	Dr. Khrietuo Doulo, M.Sc., Ph.D., JRF-NET (Assoc. Prof. Retired)	Mathematics	Visiting Lecturer





# COLLEGE GOVERNING BODY

<b>Mr. Vezuhu Keyho</b> , <i>Former Principal &amp; Current Chairman, Supply Colony, Kohima</i>	Chairman
<b>Dr. Zokho Venuh</b> , <i>Principal, Capital College of Higher Education</i>	Member Secretary
<b>Mr. Vevohu Kezo</b> , <i>Vice Principal, Capital College of Higher Education</i>	Member
<b>Prof. D. Kuolie</b> , <i>Dept. Linguistics NU, Merema, Nagaland</i>	Member
<b>Dr. Khrietuo Doulo</b> , <i>Assoc. Prof. Kohima Science College, Jotsoma(Retired)</i>	Member
<b>Mr. Zacilhu Vadeo</b> , <i>Ex-Minister (NLA)</i>	Member
<b>Mr. Kekhwengulo Lea</b> , <i>Vice Chairman, Nagaland Co-Operative Bank, Nagaland</i>	Member
<b>Mr. Vekhozo Khamo</b> , <i>Former Principal, Alder College</i>	Member
<b>Mr. Kenneth Punyu</b> , <i>Assoc. Prof, Kohima Science College, Jotsoma</i>	Member
<b>Mrs. Suohienuo</b> , <i>Principal, SIRD, Nagaland</i>	Member
<b>Mrs. Abeino Zashu</b> , <i>Senior Lecturer, Capital College of Higher Education</i>	Member

## COLLEGE RULES AND REGULATIONS

1. As per the Nagaland University rules, a student is required to have minimum attendance of 75%.
2. Leave of absence will not be entertained during examination.
3. No refund of fees under any circumstance once admission has been granted.
4. Monthly tuition fees should be paid before the 15th of every month, failing which a sum of Rs. 5 /- per day will be charged as late fine.
5. No transfer certificate will be issued unless 12 months tuition fee and other dues are cleared.
6. Misbehaviour towards faculty members will result in expulsion from the college.
7. Disciplinary actions in the form of fines may be imposed by the college administration whenever and wherever relevant.
8. Any damage to college property shall have to be compensated by the student(s) concerned.
9. Students shall not speak in Nagamese within the college campus.
10. Students whose parents are not residing in Kohima must keep a local guardian.
11. The Students' Council and its activities shall strictly remain subordinate to the authority of the College Principal.
12. No tribal union or any other organization other than Students' Council will be allowed to form.
13. Disciplinary action shall be taken against students found using any form of intoxicants within college premises or during college activities.
14. Students shall not come to college in shorts or miniskirts, and discourage students use artificial dye on hair within college campus. Students should at all times wear decent cloths and adhere to rules and resolutions passed by the college from time to time in this regard.
15. If any problem arises concerning the students, the case will be settled with the legal guardian, and the decision of the college authority will be final.
16. College uniform is worn from Monday to Thursday and on any important occasion of the college.
17. Admission is granted subject to acceptance of the above rules.

**ACADEMIC CALENDAR 2023-24(Tentative)**

SL. NO.	EVENT	DATE/PERIOD
1	Reopening of the college	1 <sup>st</sup> of July 2023
2	Course Orientation for BA/BSc 1 <sup>st</sup> Semester	3 <sup>rd</sup> of July 2023
3	Commencement of Classes for all Semesters	4 <sup>th</sup> of July 2023
4	Assignment/Presentation	17 <sup>th</sup> July – 16 <sup>th</sup> Sept. 2023
5	Orientation for NSS & RRC	29 <sup>th</sup> July 2023
6	Freshers' Day	5 <sup>th</sup> Aug 2023
7	Social Work	19 <sup>th</sup> Aug 2023
8	College Foundation Day	20 <sup>th</sup> Aug 2023
9	Internal Test	11- 16 <sup>th</sup> Sept. 2023
10	Sports Week	9-11 <sup>th</sup> March 2024
11	Seminar/Workshop/Career Guidance	2 <sup>nd</sup> Sept. 2023
12	NU Foundation Day	6 <sup>th</sup> Sept. 2023
13	Submission of Internal Marks	30 <sup>th</sup> Sept. 2023
14	Internal Assessment Result Declaration	1 <sup>st</sup> Week of Oct. 2023
15	Filling of Examination Form for all Semesters	1 <sup>st</sup> Week of Oct. 2023
16	Odd Semester Examinations (NU)	1 <sup>st</sup> Week of Nov. 2023
17	NSS Special Camp	2 <sup>nd</sup> Week of Oct. 2023
18	Provisional Result of Odd Semesters	1 <sup>st</sup> Week of Dec. 2023
19	Admission to BA/BSc 2 <sup>nd</sup> , 4 <sup>th</sup> , & 6 <sup>th</sup> Semesters	2 <sup>nd</sup> Week of Dec. 2023
20	Winter Break	18 <sup>th</sup> Dec. 2023 to 14 Jan. 2024
21	College Reopening	Jan. 15, 2024
22	Course Orientation	17 <sup>th</sup> Jan. 2024
23	Commencement of Regular Classes	18 <sup>th</sup> Jan. 2024
24	Parents/Teachers Meeting	1 <sup>st</sup> Week of Feb. 2024
25	Assignment/Presentation	1 <sup>st</sup> – 28 <sup>th</sup> Feb. 2024
26	Literary Day	2 <sup>nd</sup> Week of Feb. 2023
27	Internal Test	1 <sup>st</sup> Week of March 2024
28	Submission of Internal Marks	30 <sup>th</sup> March 2023
29	Selection Result Declaration	2 <sup>nd</sup> April 2023
30	Filling of Examination Forms for all Semesters	2 <sup>nd</sup> Week of April 2023
31	Even Semester Examinations (NU)	1 <sup>st</sup> Week of May 2023
32	Result Declaration of BA/BSc 2 <sup>nd</sup> Semester	10 <sup>th</sup> June 2024, 2024
33	Admission to BA/BSc 3 <sup>rd</sup> & 5 <sup>th</sup> Semesters	11 <sup>th</sup> – 14 <sup>th</sup> June 2024
34	Semester Beak (Summer)	15 <sup>th</sup> - 30 <sup>th</sup> June 2024
35	New Admission to BA/BSc 1 <sup>st</sup> Semester	1 <sup>st</sup> July 2024
36	College Reopening	3 <sup>rd</sup> July 2024
37	Course Orientation for all Semesters	5 <sup>th</sup> July 2023
38	Commencement of Regular Classes	6 <sup>th</sup> July 2024





# College Anthem

**In the heart of the Capital**

**Capital College of Higher Education solemnly stands**

**As a shining light**

**It beckons all who thirst for wisdom**

**Softly and tenderly**

**It beckons all who hunger for knowledge**

**From afar and near**

**From the hills and beyond.**

**With God as the alpha and omega**

**With hearts laden with hopes and dreams**

**We will climb onto greater heights.**



